

CAMERA BELLOWS

BULLETIN CB-100

Gortite camera bellows are designed for applications where sealed, light-tight protection is required.

When designing or requesting a quote for a Folded Camera Bellows, 3 major parts must be defined. The two ends and the expandable bellows cover each must be dimensioned separately.

APPLICATION

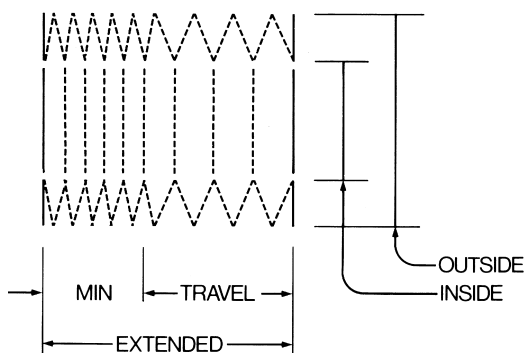
- Camera Copy Machine
 Enlarger Other

COVER DIMENSIONS

Extended without Ends _____

Travel _____

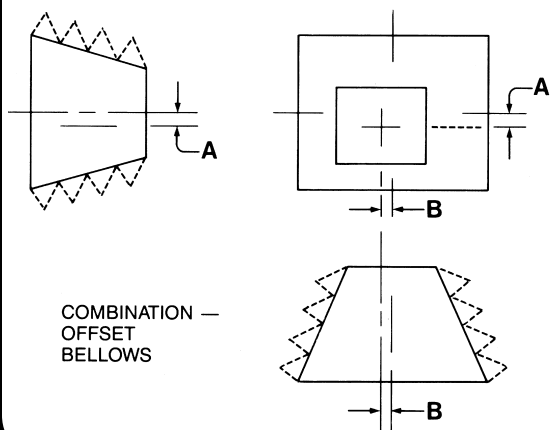
Min. without Ends _____



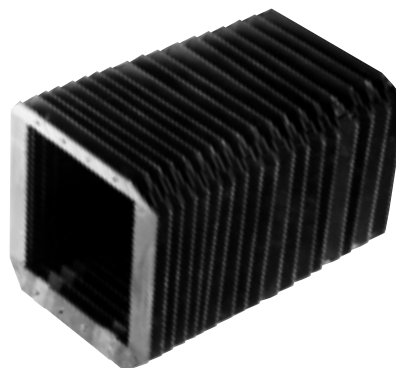
TYPE OF COVER

- Sq. – Rectangular Offset
 Tapered Combination

One End	x	Inside X	x	Outside
Other End	x	Inside X	x	Outside



- **Folded type construction using elastomer coated fabrics**
- **Tear and cut resistant**

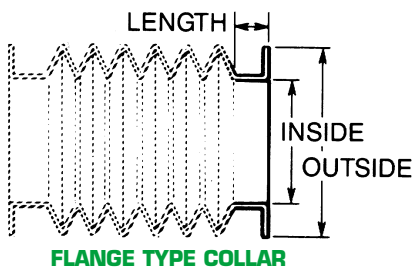
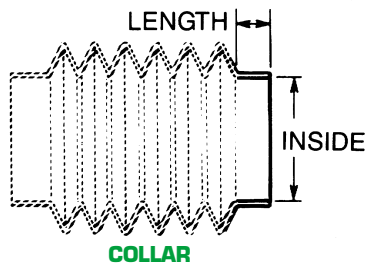
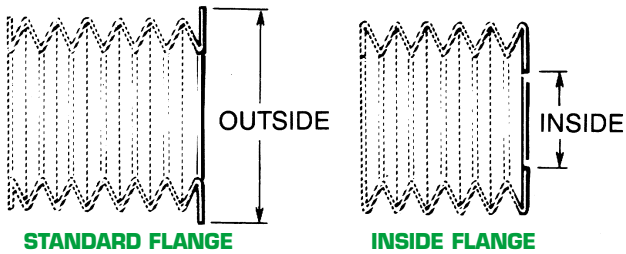


- **Provides a complete seal against light, air, and dirt**
- **Available in any size and shape, without tooling charges**



A&A Manufacturing Co., Inc.
 2300 South Calhoun Road • New Berlin, WI 53151
 (262) 786-1500 Phone • (262) 786-3280 Fax • www.gortite.com

END DIMENSIONS



ONE END

- Standard Flange Collar
 Inside Flange Flange Type Collar

_____ x _____ Inside

_____ x _____ Outside

Length _____

MOUNTING FRAME REQUIRED

- Yes No

TYPE (see Types of Ends) _____

OTHER END

- Standard Flange Collar
 Inside Flange Flange Type Collar

_____ x _____ Inside

_____ x _____ Outside

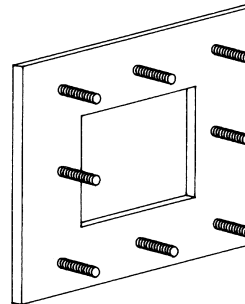
Length _____

MOUNTING FRAME REQUIRED

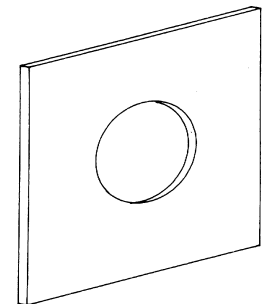
- Yes No

TYPE (see Types of Ends) _____

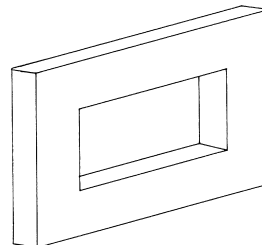
TYPES OF ENDS



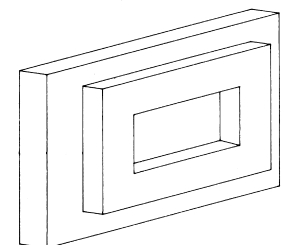
END FLANGE W/ STUDS



FLAT END FLANGE



STANDARD WOOD FRAME TO FIT INSIDE OR OVER OPENING



COMPOUND WOOD FRAME W/ FELT SURFACE

HOW TO ORDER

For Quotation Only

Date _____

Quantity Required _____

Date Required _____

Order Number _____

Company Name _____

Address _____

City _____

State _____ Zip _____

Phone _____ Fax _____

Attention _____



A&A Manufacturing Co., Inc.
 2300 South Calhoun Road • New Berlin, WI 53151
 (262) 786-1500 Phone • (262) 786-3280 Fax • www.gortite.com