

Way Protectors

Gortite® Way Protector Bellows are high-quality, durable, thermoplastic or elastomer-coated fabric covers designed to protect way surfaces or machine slideways from dust, dirt, chips, oils, coolants, sparks and other abrasives. Keeping foreign material off of your guide ways ensures you a more accurate machine.

Custom designed to your specific application, Gortite® engineers will select the best material suited for your application utilizing a variety of different constructions for horizontal, vertical and/or crossrail applications.

Gortite® offers any size or shape of way protectors to fit your application. For high speeds, bellows are constructed with a pantographic design. Machines can be retrofitted for a way protector, even if none were on the original machine design. A way protector can save costly repairs of way surfaces or slideways, plus offer reduced down time for bellows replacement.

Gortite® also offers linear rail covers in standard or custom sizes to fit all makes and models of rail manufacturers. Linear rail covers are manufactured of elastomer coated fabric materials and equipped with stiffeners to ensure solid, lasting support at every fold.



Sewn-Folded Way Covers and Gortrac® Cable and Hose Carriers provide protection for a CNC machine tool.



Sewn-Folded Column, Crossrail, and Bedway Covers.



Gortite® Way Protectors on a beam path for a high-tech laser-cutting machine.

Heat-sealed crossrail and bedway covers keep contaminants from damaging linear rails on a laser cutting machine.



Way Protectors

Gortite® Way Protectors are available in a wide variety of shapes, sizes, constructions and elastomer coated fabrics or rubbers to fit your specific applications needs. The following are various processes A&A uses to make way protectors and some specific applications of Gortite® way protectors; these are just a small sample:

Standard Sewn

Standard Sewn Covers are manufactured of heavy-duty elastomer coated fabric. Seams can be coated with liquid elastomer for use in extremely abrasive conditions. Available without tooling charges in almost any size and configuration, they are ideal low-cost protection solutions for applications where covers need not be liquid or air tight.



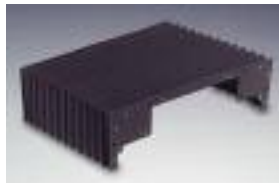
Vulca-Seal®

Vulca-Seal® is a patented A&A process in which sections of elastomer coated fabric are joined by vulcanizing to provide a clean, aesthetically pleasing cover. Vulca-Seal® covers are available in any size or shape, with low tooling costs.



Heat-Sealed/Sewn-Folded

Heat-Sealed and Sewn-Folded way covers are manufactured of a single sheet of elastomer coated fabric material with a PVC stiffener in each section. These covers provide excellent protection for linear bearings and other precision equipment, and are also ideal for applications requiring very large or rigid covers.



Gordillo

Gordillo is a sewn-folded or heat-sealed way protector made with stainless steel plates covering each convolution. Used in applications where hot chips or weld splatter might damage a conventional bellows and where there is insufficient space for a Telaflex® metal cover.



Thermic-Weld®

This cover material is one piece with no seams, stitch-holes or breaks. Completely sealed with PVC stiffeners die-cut to match your specifications. Thermic-Weld® covers come with standard metal end plates for ease of installation and service.



Thermiseal

Gortite® Thermiseal Polyurethane Covers are designed for applications requiring completely sealed (air, dust and liquid tight) covers with an excellent open-to-closed ratio. Manufactured from either PVC or Urethane depending on your application. Thermiseal covers are available in a variety of shapes: Open, Closed and Round Shaped.

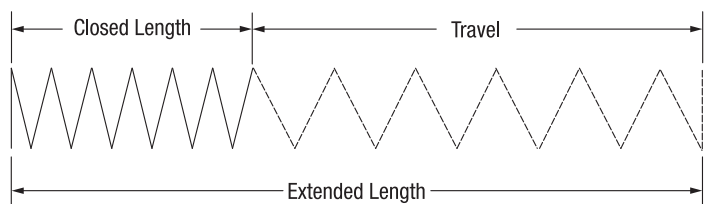


Way Protector Design Information

To complete the order form on the next page, please note the following:

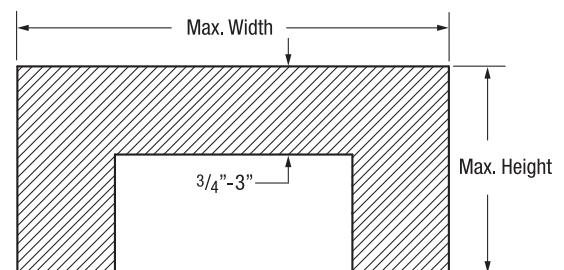
Dimensions:

Fill in all required way dimensions, also show any obstructions which would interfere with the protector.



Specify extended and closed length requirements or indicate travel and we will advise closed length.

Extended length = closed length + travel.



Bellows Width:

Cross-sectional width of way protector can vary from 3/4" to 3", depending upon clearance and closed length requirements.

Please indicate the type of service for the bellows on the order form

- Normal (small particles, occasional large chips, light oil)
- Heavy chip load
- Coolants or cutting oils
- Other debris, liquids, gases or abrasives

If the way to be covered does not look like our typical examples shown, please send a sketch/drawing (DWG or DXF preferred) of your needs, showing your actual way dimensions.

How to Order Way Protectors

Date: _____ For Quotation Only: _____ Address: _____
 Order Number: _____
 Company Name: _____ City: _____ State/Prov. _____
 Contact: _____ Country: _____ Zip/Postal Code: _____
 Quantity of covers needed: _____ Telephone: _____ Fax: _____
 E-Mail: _____

Please supply a sketch/drawing/CAD file (DWG or DXF file format) photo of your application

1. Application (* denotes a required field)

External Environment* Please indicate percentage(s) for the following:

- Abrasive particles (Dirt, dust, sand grit, etc.)
 Cutting Oils/Coolants/Lubricants (Type) _____
 Chemicals (Type) _____
 Aluminum Water/Moisture Hot Chip

Weld Splatter: Light Medium Heavy

Other (Please describe) _____

Temperature Range*: Ambient: _____ Minimum: _____ Maximum: _____

Maximum Travel Speed: _____

Acceleration (Please indicate units of measurement): _____

Movements/Day: _____ Axis: _____

- 2. Cover Type** Cross Rail Vertical Column Large Bedway
 Flat Way Linear Way Dovetail Way

Other _____
 (If measuring from existing cover, a drawing is required; DWG or DXF file preferred)

3. Cover Dimensions (Please specify in inches)

Extended Length: _____ Retracted Length: _____

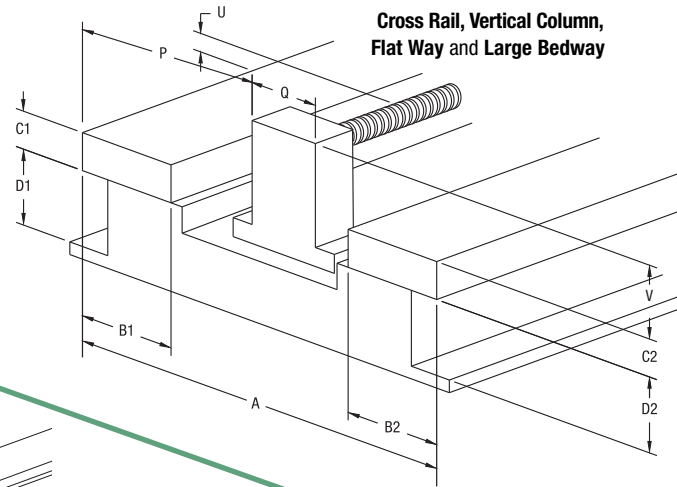
Travel Distance: _____

Maximum Height: _____ Maximum Width: _____

4. Way Dimensions (Please specify in inches)

For Cross Rail, Vertical Column, Flat Way or Large Bedway

- A _____ C2 _____ Q _____
 B1 _____ D1 _____ U _____
 B2 _____ D2 _____ V _____
 C1 _____ P _____



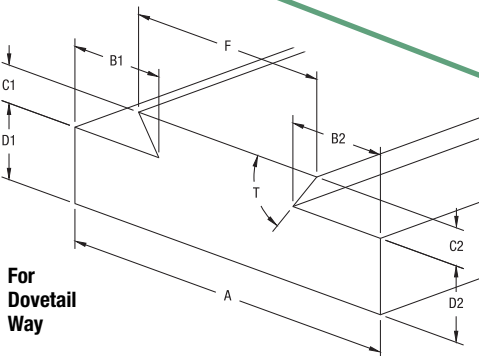
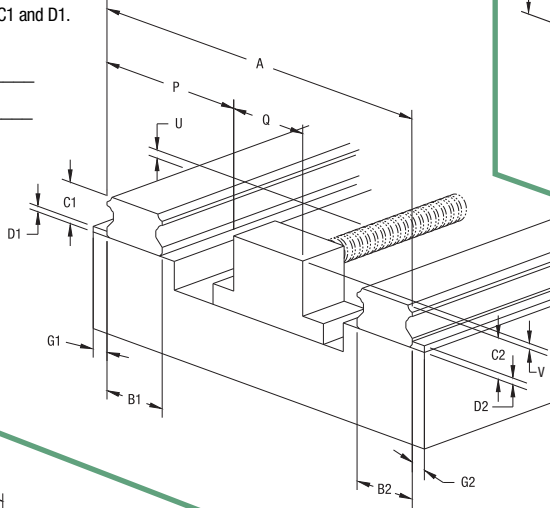
For Linear Way: Single Rail Dual Rail

(If Single Rail, indicate only dimensions B1, C1 and D1. See Single Rail Diagram on Page 12)

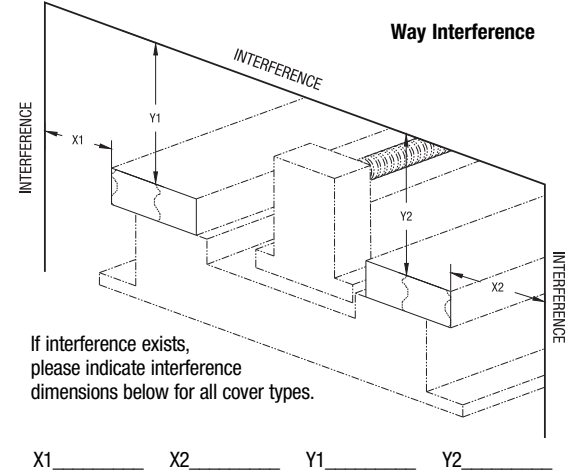
Rail Manufacturer: _____

Rail Model: _____

- A _____ G1 _____
 B1 _____ G2 _____
 B2 _____ P _____
 C1 _____ Q _____
 C2 _____ U _____
 D1 _____ V _____
 D2 _____



- A _____ D1 _____
 B1 _____ D2 _____
 B2 _____ F _____
 C1 _____ T _____
 C2 _____ (degrees)



- 5. Mounting Plates** Yes End 1 Standard Flange Closed Flange No
 End 2 Standard Flange Closed Flange

▼ Please fax or e-mail the completed form to the number/address shown.