

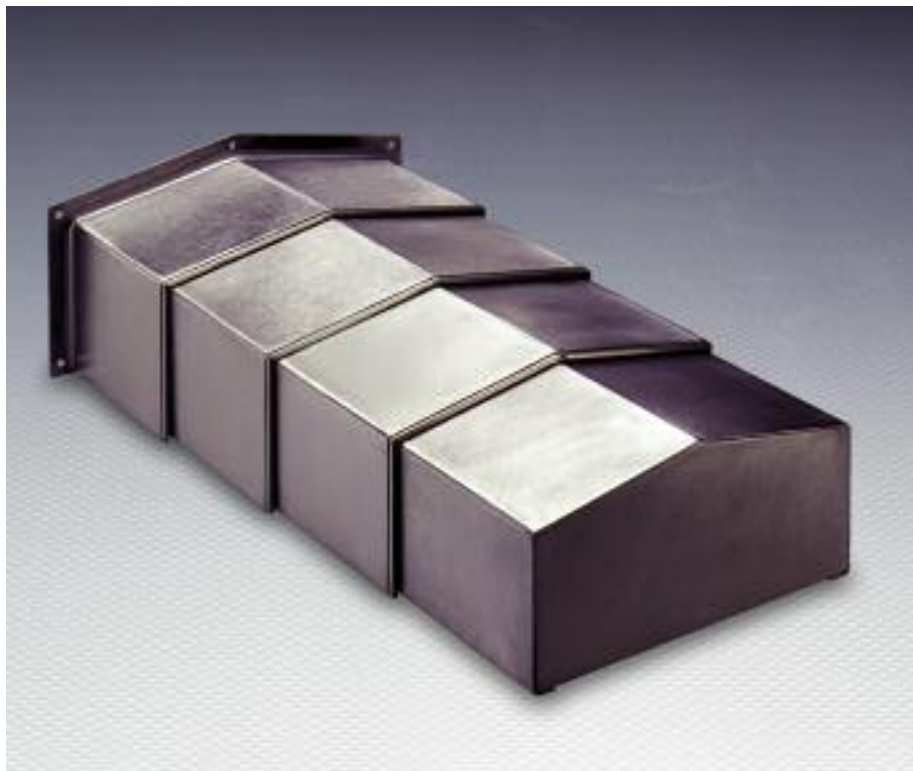
Telaflex® Telescopic Steel Way Covers

Engineered and Constructed to Provide Maximum Protection In The Most Rugged Applications

- Any Size or Shape
- Bright Buffed and Oiled Finish
- Heavy Duty Wipers
- Custom Designed To Fit Your Machine
- Nylatron Guides Standard with Optional Brass Guides or Bearing Rollers

Telaflex® metal telescoping way covers are designed to protect ways and screws from hot chips, dirt, oils, coolants, and from accidental damage caused by tools and work pieces. Manufactured of special flat steel in virtually any gauge, in steel or stainless steel, Telaflex® covers are suitable for any application, in any environment.

All Telaflex® way covers are fitted to simulated ways and are tested in operation before delivery to you. They are shipped “ready-to-mount,” requiring no additional adjustments.

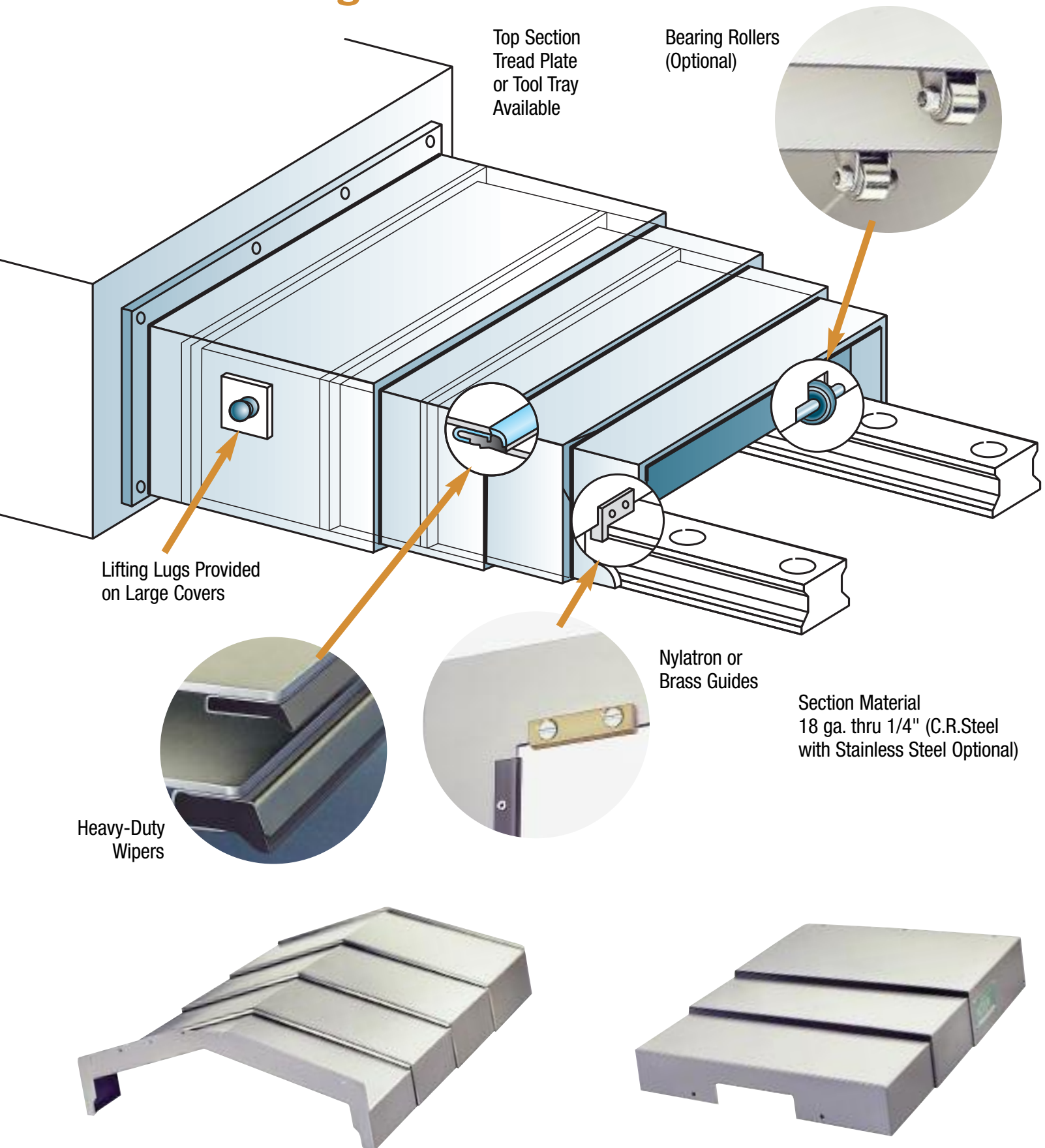


Telaflex® protects horizontal ways and Gordillo covers vertical ways on this CNC machining center.



Telaflex® telescoping steel way covers provide protection on a CNC horizontal machining center.

Telaflex® Design Features



Top Section
Tread Plate
or Tool Tray
Available

Bearing Rollers
(Optional)

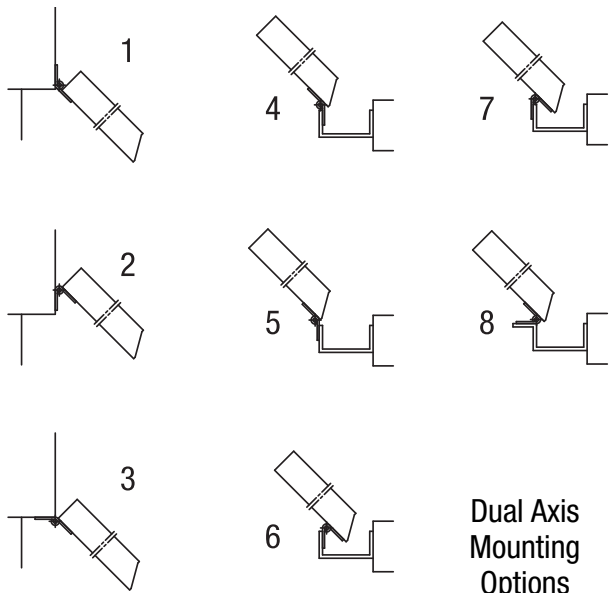
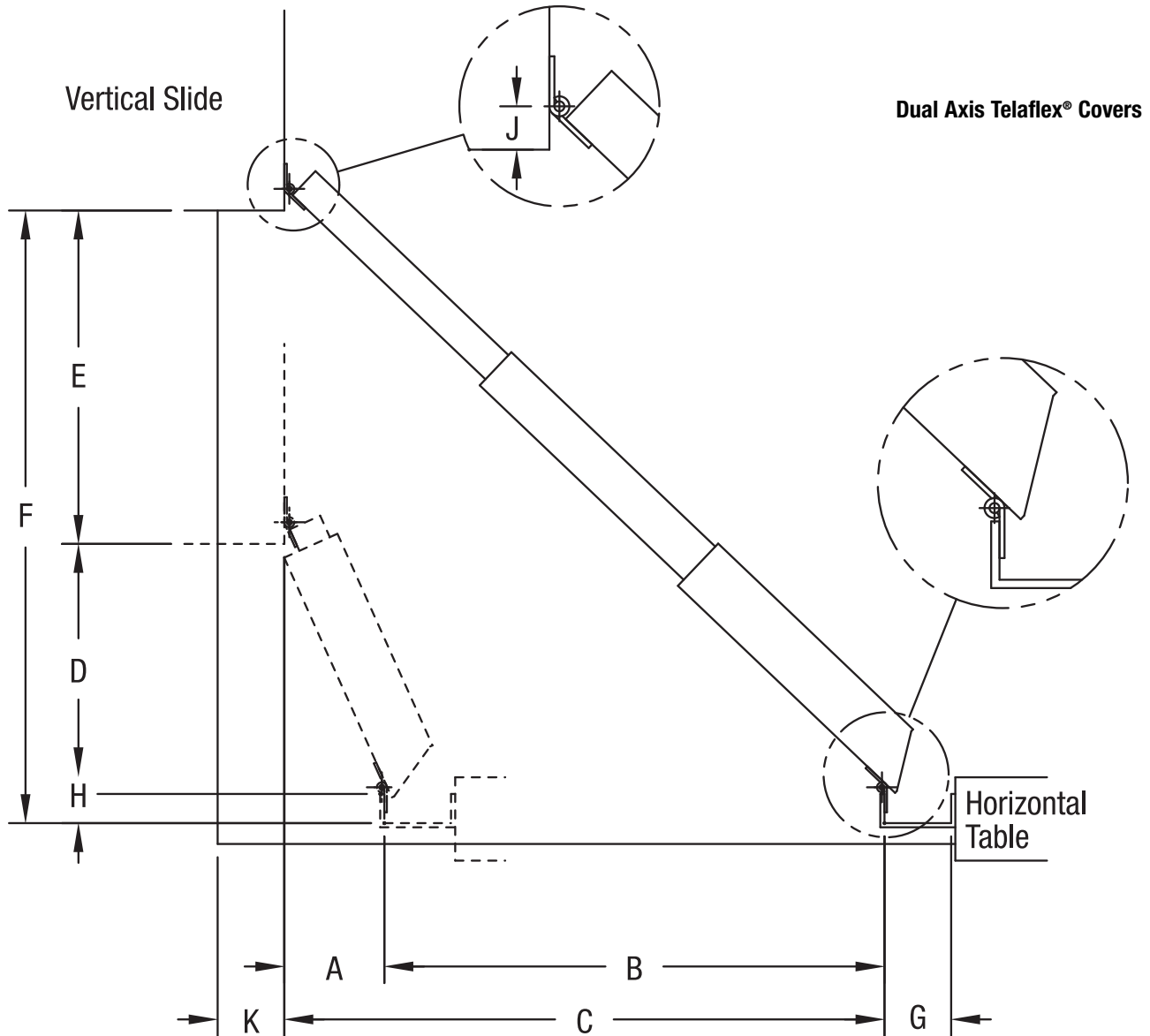
Lifting Lugs Provided
on Large Covers

Heavy-Duty
Wipers

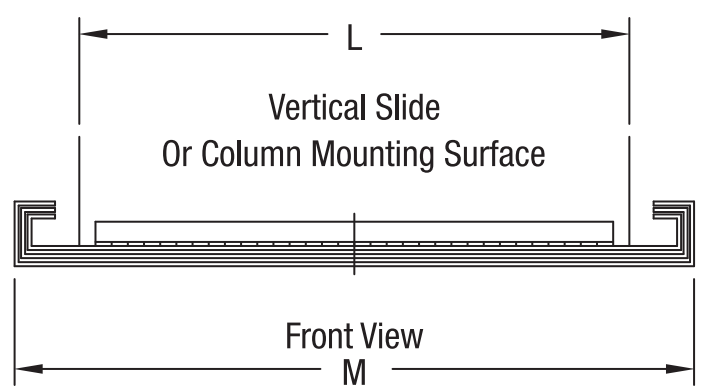
Nylatron or
Brass Guides

Section Material
18 ga. thru 1/4" (C.R. Steel
with Stainless Steel Optional)

How to Order **Telaflex®** (Dual Axis)



Dual Axis
Mounting
Options



How to Order **Telaflex®** (Dual Axis)

Date: _____ For Quotation Only: _____ Address: _____
Order Number: _____
Company Name: _____ City: _____ State/Prov. _____
Contact: _____ Country: _____ Zip/Postal Code: _____
Quantity of covers needed: _____ Each Set Telephone: _____ Fax: _____
Dual Axis Telaflex® Covers: Please also submit order sheet on Page 39 or 41 E-Mail: _____

Please supply a sketch/drawing/CAD file (DWG or DXF file format)/ photo of your application

We have a database of over 10,000 covers. Please contact your Gortite® representative to locate your previous order(s) or to see if one fits your exact requirements.

Way Type: Box Way Hydrostatic (Relating to fluids at rest or to the pressures they exert or transmit)
 Linear Rail: Make _____
Model _____

1. Application

Existing Covers Only: Manufacturer _____
Model/Part# _____
What is the machine? Make _____
Model _____
 Existing machine in our factory New design

What is the operating environment of the cover? Please indicate percentage(s).
 Dry Grinding Hot Chip
 Aluminum Heavy Coolant
 Other (please describe) _____ %
Working Temperature: _____ Maximum Travel Speed: _____
Acceleration (Please indicate units of measurement): _____
Movements/Day: _____ Axis: _____

2. Dimensions

A = _____ G = _____
B = _____ H = _____
C = _____ J = _____
D = _____ K = _____
E = _____ L = _____
F = _____ M = _____ (max.)

3. Mounting Configuration

For Dual Axis Upper: 1 2 3
Lower: 4 5 6 7 8

4. Options

Lifting Lugs *Note: On any cover over 250 lbs. (113 kg), a lifting system is integrally designed.*
 Guide Bars (Recommended)
 Stainless Steel 4-Way Plate (separate) Inspection Door
 Other _____

▼ Please fax or e-mail the completed form to the number/address shown.