

Light-Duty Fabric Roll Ups

Shade Roller Covers

Gortite® Shade Roller Covers provide an ideal method for protecting machines that do not require the complete seal of a bellows cover. Machines, such as drilling and milling units, which generate moderate chip loads without large bed way travels, are well suited for the application of the shade cover.

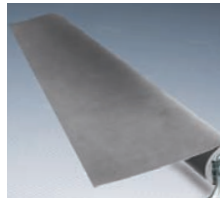
Shades are available in many elastomer-coated fabrics with rollers supplied in widths of 12" to 12'. Rollers can be supplied complete with mounting brackets and can accommodate machine travels up to 20'.

Shade rollers are available with the following cover materials:

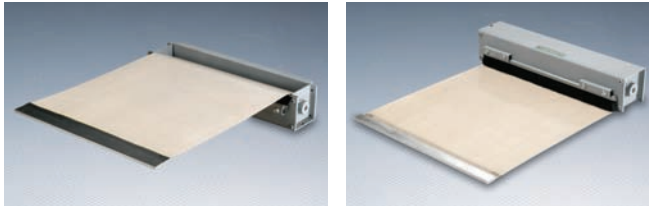
18NN .018 gauge neoprene coated nylon for **light protection** (chips, coolants)

33NN .033 gauge neoprene coated nylon for **moderate protection** (coolants, chips)

60HN .060 gauge hypalon coated nylon for **heavy protection** (coolants, chips, hot chips)



Note: Mounting bracket shown is not actual bracket shipped.



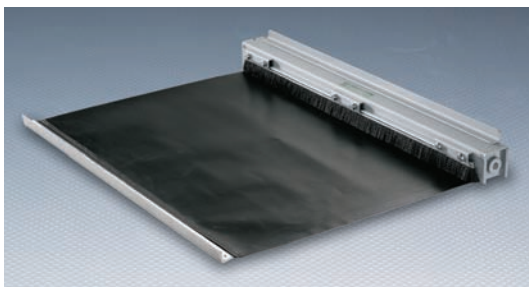
Vertiflex®

Gortite® Vertiflex® Roll Up Canister Column Covers are designed to protect vertical machine ways and screws against damage from hot chips, cutting oils, lubricants, and abrasive particles.

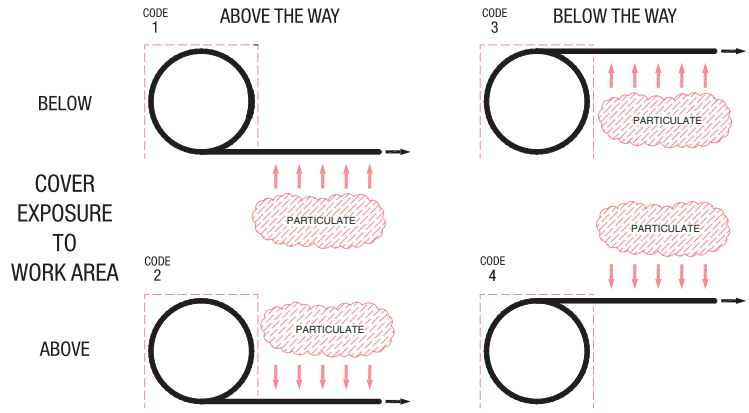
- Black Teflon-coated fabric shade
- Protects vertical ways from hot chips, cutting oils, etc.
- Steel canister take-up with wiper
- Up to 170" vertical travel
- Widths to fit any machine

A brush wiper on the canister cleans the shade as it retracts and prevents foreign matter from damaging the take-up hardware.

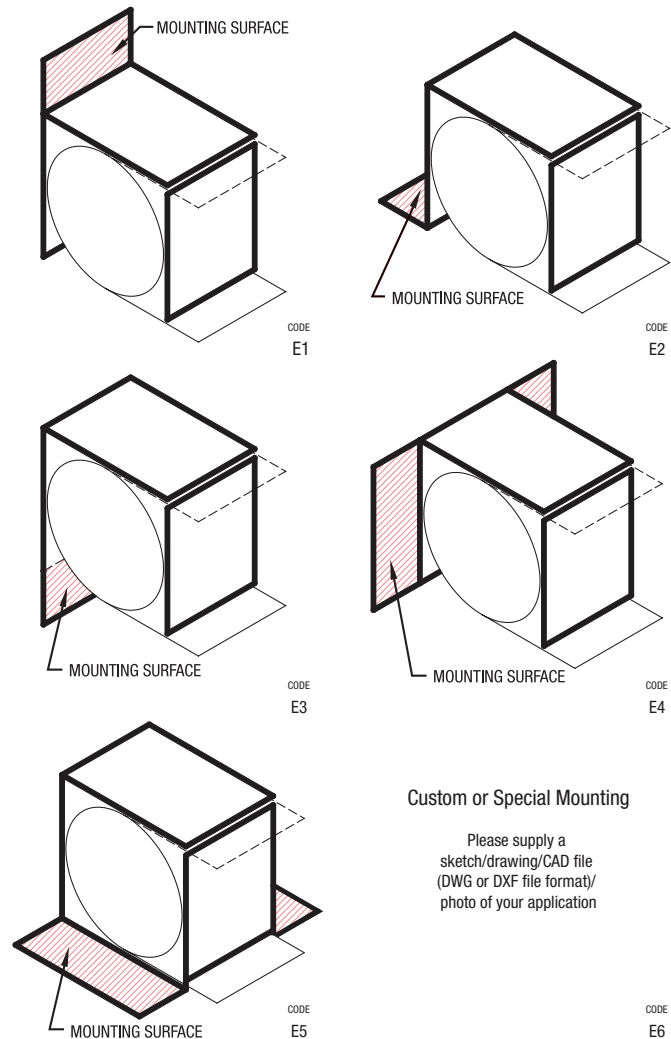
Canisters are available in two sizes, with a choice of four mounting configurations for ease of installation.



CANISTER/ROLLER ORIENTATION TO THE WAY



CANISTER MOUNTING ORIENTATION



Custom or Special Mounting

Please supply a sketch/drawing/CAD file (DWG or DXF file format)/photo of your application

Shade Width	2" Canister Maximum Travel	3" Canister Maximum Travel
6" – 11 ⁷ / ₈ "	20"	30"
12" – 17 ⁷ / ₈ "	33"	60"
18" – 23 ⁷ / ₈ "	50"	90"
24" – 29 ⁷ / ₈ "	65"	135"
30" – over	65"	170"

How to Order Light-Duty Fabric Roll Ups

Date: _____ For Quotation Only: _____ Address: _____
Order Number: _____
Company Name: _____ City: _____ State/Prov. _____
Contact: _____ Country: _____ Zip/Postal Code: _____
Quantity of covers needed: _____ Telephone: _____ Fax: _____
E-Mail: _____

**Please supply a sketch/drawing/CAD file (DWG or DXF file format)/
photo of your application**

Roll Up **without** canister Roll Up **with** canister Roll Up **with** brackets

1. Application

Machine Make: _____

Machine Model/Part#: _____

Existing machine in our factory New design

Cover Orientation: Horizontal Crossrail Vertical

Clean room FDA Noise abatement

What is the operating environment of the cover? Please indicate percentage(s).

Dry Grinding Hot Chip Aluminum Heavy Coolant

Other (please describe): _____

Temperature: Ambient: _____ Minimum: _____ Maximum: _____

Maximum Travel Speed: _____

Acceleration (Please indicate units of measurement): _____

Movements/Day: _____ Axis: _____

2. Dimensions

Shade Width: _____

Travel Distance: _____

Total Shade Length: _____

Maximum Diameter Limitation: _____

3. Shade Material

Based on your application information, Gortite will choose the fabric which best meets your requirements.

4. Roller Type

Standard Sure-Spring™ (for high-speed applications)

5. Shade Mounting Bracket

.75" Standard Angle .75" Standard Bar

Hinge: Towards Particulate Away from Particulate

6. Roller Mounting Brackets

1" 2" 3"

Mounting on exposed side of material

Mounting on unexposed side of material

Note: If Roll Up Cover with brackets, bracket size is determined by maximum roll up size.

7. Shade Exposure to Work Area

Please refer to codes as shown on Page 28.

1 2 3 4

8. Wipers

Brush (Standard) PVC Felt Stainless Steel

Other _____ None

Last three selections must be specified:

9. Maximum Canister Dimensions – Selection Required

2" 2.5" 3" 3.5" 4" 4.5" 5" 5.5"

6" 6.5" 7" 7.5" 8" 8.5" 9" 9.5"

10" Other (Custom) _____

10. Canister Mounting Options – Selection Required

Please refer to codes as shown on Page 28.

E1 E2 E3 E4 E5 E6

11. Canister Surface Treatment – Selection Required

Raw Steel Painted Steel Stainless Steel

Other (Paint Spec, etc.) _____

▼ Please fax or e-mail the completed form to the number/address shown.